

IMPACT REPORT



A look at what we have achieved in 2015

IMPACT REPORT

It has been a busy year at Creative Futures!

During 2014-15 we delivered two **large scale primary school projects** ('Act Sing Play' & 'Ensemble Basildon') which included **1,000 children** from areas outside of London, including Sussex, Coventry and Essex. We continued to run our regular programmes in London alongside these, where **more than 66%** of the 1,800 participants **were from Black and Minority Ethnic groups**.

Our work has been delivered through 16 separate projects by **more than 60 artists**. We also delivered a number of workforce training and professional development courses and events.

In total we delivered some **2,000 workshops** or group instrumental teaching sessions during the year. Our Creative Network, the artist educators whom we support and engage to deliver our programmes, now spans over **160 artists** across all art-forms and genres.

In 2014-15 at creative futures we worked with approximately

2,800

people:

300

adults

including those with mental health problems

1,100

pre-school age

(0-5 years)

1,400

school age

(5-18 years) including those with Special Educational Needs, Looked After Children & Young People



Example One

EARLY YEARS

“My child has grown in **confidence** around others due to the sessions.”

Parent

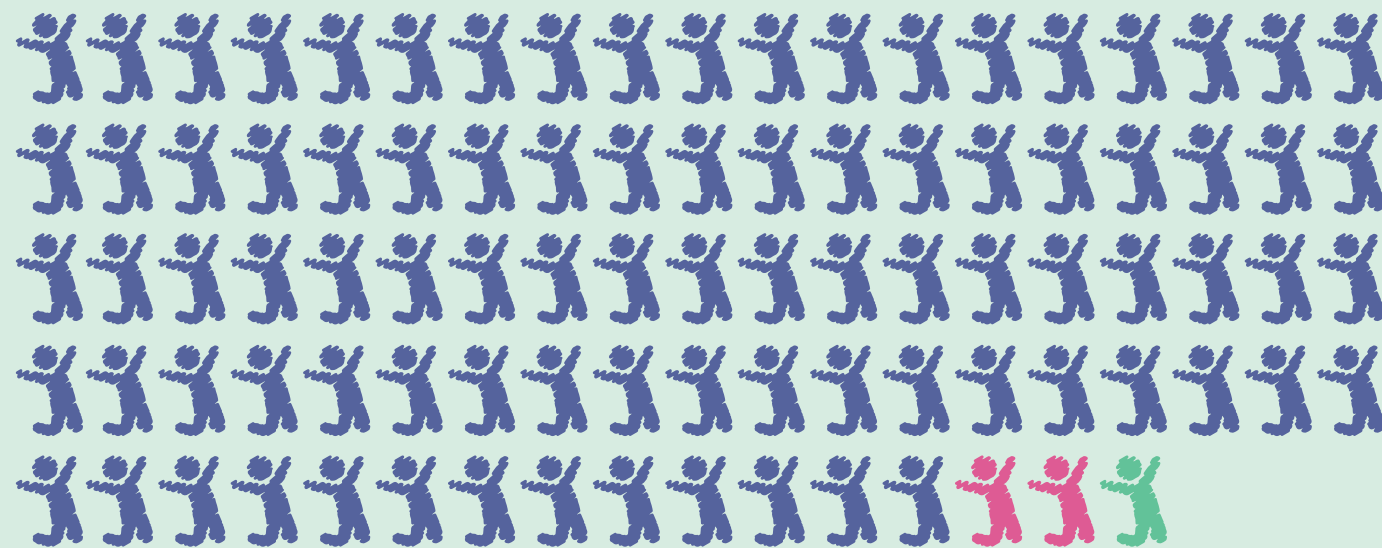


“I’d recommend **Creative Futures** to anyone. It delivers a **brilliant** service - not just ticking boxes, [they] care about the children, families and their **needs**.”

Children’s Centre Manager

“Music & movement sessions help my child to make friends”

said by parents and carers at an east London Children’s Centre, 2014



Helps a lot!

Helps a little

No change

One of Creative Futures’ flagship Early Years music programmes, ‘A Sound Start’ at an infant school in Newham, saw an **increase of 16% in pupils achieving ‘Good Level of Development’** in 2014 which the school attributed to our weekly music workshops. The programme is led by 3 expert musicians who deliver sessions involving music, movement, story-telling and creativity to 270 Nursery and Reception pupils every week. **95% of pupils have English as an Additional Language**, and the school has high levels of additional needs, **which our programme is carefully designed to support.**

We also deliver music and movement sessions in Children’s Centres and community ‘drop-ins’ across London, supporting the many vital areas of early childhood development and parent-child bonding.

Example Two

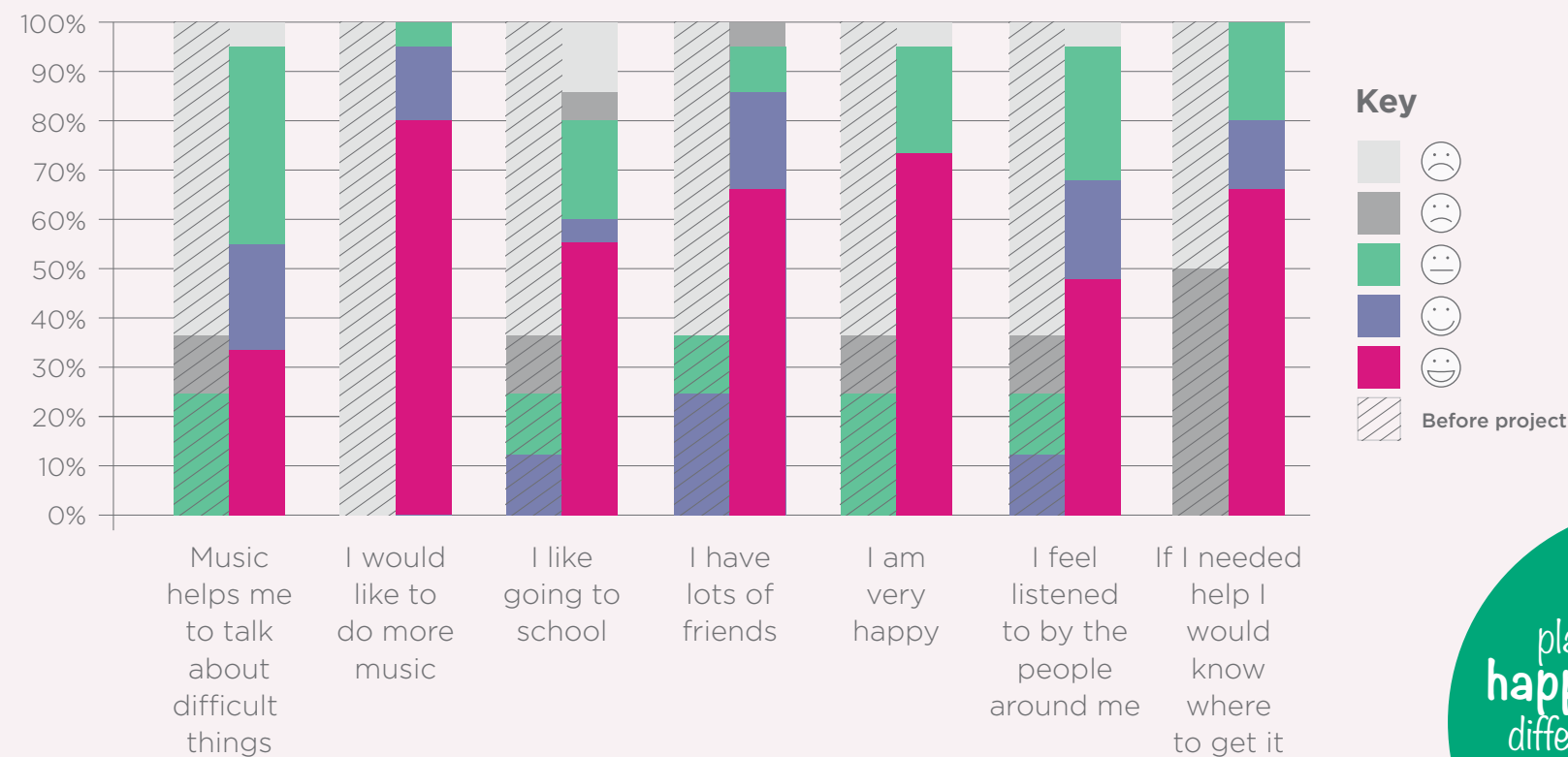
LOOKED AFTER CHILDREN & YOUNG PEOPLE

"We've seen some of our young ladies go from shy and retiring, not speaking out, to **"oh yeah, I'll sing that bit"** and that's transferring into other areas"

Participation Officer,
Local authority



Pre-project and post-project questionnaires completed by Looked After young people as part of 'Musical Futures' project, 2013-15



'Musical Futures', a 2-year music programme funded by Youth Music, reached **more than 70 looked after children and young people** aged 7 to 18 in Hounslow and Wandsworth.

The programme involved weekly sessions as well as intensive holiday courses which culminated in the creation and launch of an album of original work. For many of those involved it was an **inspiring, transformational experience.**

"This was a place where I felt **happy** - I was around different people and I was more **confident**, more **open**"

Participant



"I think it's one of the **best** things I've achieved in my life... **Creative Futures** is what got me into actually wanting to do music and I found out how much **I really love music** ... that's why I'm going on to do music in college. I want to be a music therapist."

Participant, 'Musical Futures' project with Looked After Children & Young People

Example Three

SPECIAL EDUCATIONAL NEEDS

Creative Futures is collaborating with researchers from the UCL Ear Institute and Institute of Education to explore the impact of musical engagement, and specifically singing, on deaf and hearing impaired primary and secondary aged pupils. The specialist vocal workshops in primary settings have shown early indications of **positive impacts on pitch perception** with correlating **impacts on speech perception and communication skills**.

We are keen to continue exploring the potential here and are excited to announce that we have been **awarded funding** from Youth Music to extend this music programme in two specialist secondary deaf schools from 2015.



OUR VALUES

Authoritative



Our programmes are **rooted in research**, managed and monitored by **professionals**, and delivered by **inspiring, experienced** artists & educators, ensuring all projects are of the **highest quality**.

Responsive



We tailor our programmes to the **specific needs** and **priorities** of our partners and participants; we constantly **adapt** our approach to the **meet the challenges of a changing landscape**.

Diverse



The arts play a crucial role in society, not only for their aesthetical value but also for their **positive impact on communities, health, well-being and education**. We work with organisations of any size and people from all backgrounds to ensure a wide reach of **high quality art**, with a strong focus on helping those most in need. This is where our programmes have the most **significant impact**.

Innovative

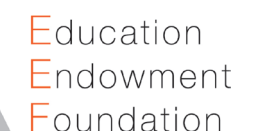


We welcome **innovative thinking** and new partnerships, and work with colleagues across the education, social, health, arts and research sectors to constantly review, improve and extend our work.

PARTNERSHIPS



SIGNIFICANT FUNDERS IN 2014-15



CONTACT DETAILS

Julian Knight & Vanessa Stansall
at **creative futures**:

020 8964 2700

www.creativefuturesuk.com

Company No. 7578987

Charity No. 1143459